

THE CORAL FUND

Support CCMI's capital expansion plans via the Coral Fund.

Help us build a more impactful organisation dedicated to marine research, education, and conservation.



www.reefresearch.org





INTRODUCING THE CORAL FUND

CCMI is on a mission to build an 10,000+ sq ft facility dedicated to research and education, allowing us to run education courses and research programmes simultaneously, reaching more students and marine scientists than ever before. Combined with our current field marine station (5,000 sq ft), the extended capacity will enable CCMI to continue growing.

We will raise **US \$3 million for Phase 1 of the build**, and we are more than halfway there with US \$1.9 million raised to date.

The new facility will help us double our capacity for important research and education programmes. growing our impact for coral reefs.

The Coral Fund will also support:

- Resilience and climate change research - investing in our science to become region leading.
- Developing ocean stewards for the future - via cutting edge education and outreach programmes
- An early years budget - to support the new facility and allow us to deliver on these two critical project themes





WHAT IS THE PLAN AND WHY?

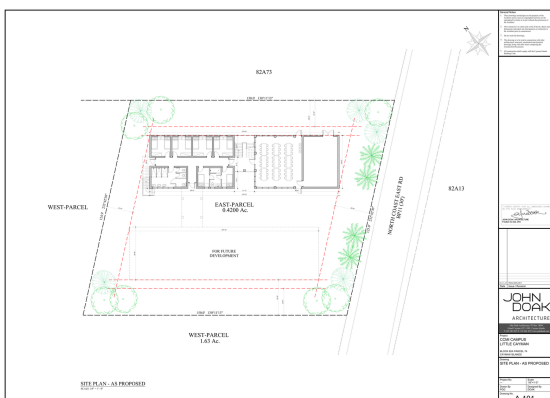
We have run out of room at our current facility. This expansion will enable CCMI to increase our accommodations, providing the capacity to allow research and education groups to operate simultaneously.

We will provide more international programming, increase visiting research and education activities, facilitate increased collaborations, and conduct more in-house research. CCMI is also committed to growing local education and scholarship programmes, requiring further resources.

The current space at CCMI will be redeveloped as a ‘working’ space, and a new facility will be developed as residential accommodations, including a new conference/classroom.

The Coral Fund is aiming to raise and apply USD \$3 million for the first phase of the project to support the expansion of the Little Cayman Research Centre by:

- Building a new accommodations facility (5000 sq ft) on a different site (donated to CCMI) to double our present capacity.
- Re-purposing the current facility to better synchronize our local education programmes, international university programmes, visiting researchers, and our expanding in-house marine research activity. The expansion will significantly increase our studying and lab capacity.



An additional phase of building will take place in the future to continue our ability to grow our efforts in both research and education. Construction of phase 2 will be contingent upon securing required funds.

CCMI HIGHLIGHTS

70m²

Coral outplanted to the wild
(linear)

5500+

Students hosted in Little
Cayman

50+

PhD, MSc students, and
internships

1500+ m

Nursery grown corals (linear)

1900+

Local scholarships provided

150+

Published scientific papers

250,000+

Reefs Go Live reach

200+

Visiting scientists

\$23,000,000+

Raised and invested in coral
reef protection for the future

\$1,000,000+

Invested in field research
every year

*If you are interested in supporting the Coral Fund,
please contact: donations@reefresearch.org*

www.reefresearch.org