

# Field Research Skills in Coral Reef Management & Restoration



7-day residential field course | June 14–20, 2026 | Little Cayman, Cayman Islands  
Strengthen your field skills in coral reef monitoring, restoration, and environmental assessment while living and diving at an active Caribbean research station on Little Cayman, a Mission Blue Hope Spot.

## COURSE OVERVIEW

An immersive, field-based training in coral reef monitoring and restoration, based at CCMI's remote research station. Gain practical experience in coral nursery techniques, rapid reef assessments, and environmental monitoring, building on established Atlantic and Gulf Rapid Reef Assessment (AGRRA) methodologies. Learn from experienced scientists who have managed one of the Caribbean's longest running coral nurseries and longest-term datasets on coral reef health in the region.

## KEY SKILLS AND TRAINING

- **Coral Restoration:** nursery installation, fragmentation, and outplanting techniques
- **Rapid Reef Assessment:** transects, quadrats, and AGRRA methodology
- **Environmental Monitoring:** indicator species, coral health, bleaching and disease, coral recruitment, reef rugosity

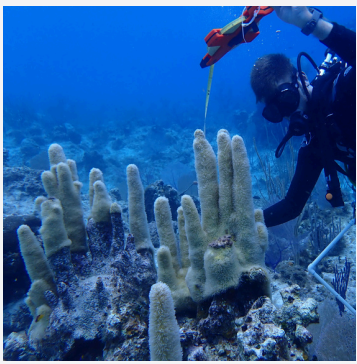
## DIVE TRAINING

- Up to 10 dives (including boat and night dives)
- PADI Peak Performance Buoyancy (PPB) Specialty
- PADI AWARE: Coral Reef Conservation Specialty

## WHO SHOULD APPLY?

- Advanced undergraduates and university graduates in marine science
- Early-career professionals in marine conservation or coastal management
- Participants seeking practical, in-water coral restoration and reef management experience
- Experienced Open Water divers (a minimum of 12 dives; a minimum of 2 dives in the last 12 months required).





## CCMI FACILITIES AND INFRASTRUCTURE

- Accommodation across two adjacent ocean-front buildings (dorms, private and semi-private rooms)
- Direct access to coral reef ecosystems within meters of the station, adjacent to the famous Bloody Bay Marine Protected Area
- Air-conditioned ocean-view classroom
- Instructional wet lab
- Three vessels for SCUBA and snorkel operations
- Dining hall with meals cooked daily by our chef

## WHY LITTLE CAYMAN?

- Very remote, yet accessible via Grand Cayman, which has direct flights from 25+ international gateway cities
- Best protected, least developed and least populated of the Cayman Islands, one of the Caribbean's top diving destinations
- Exceptionally safe, pristine field setting
- Near-baseline Caribbean reef conditions with minimal impacts from pollution and development
- Diverse, largely undisturbed terrestrial habitats (dry forest, mangroves, rocky coast) home to endemic iguanas and sea turtles

**COURSE FEE: US \$2,400**

## WHAT'S INCLUDED

- Shared accommodation at CCMI's oceanfront research station
- Three meals daily
- Up to 10 dives over the week (including a night dive and boat dives)
- Dive and snorkel gear (BYO recommended for comfort)
- All instruction by marine scientists and dive professionals + instructional materials
- Ground transportation on Little Cayman



## Not Included

- *International and inter-island flights*
- *Travel and health insurance*



[www.reefresearch.org](http://www.reefresearch.org)



## Join us!

More information:

[reefresearch.org/professional-courses/](http://reefresearch.org/professional-courses/)



Questions? [education@reefresearch.org](mailto:education@reefresearch.org)

**To register: [courses@reefresearch.org](mailto:courses@reefresearch.org)**