



NAME _____

Episode 4: World Ocean Day: Coral Reefs and Us - Our Island Guardians

Key Terms from the broadcast

During today's broadcast, we explored how coral reefs support people, wildlife, and island communities. Scientists use specific vocabulary to describe what is happening on the reef and how people can help protect it.

Match each keyword with its correct definition.

Key Term
Biodiversity
Coral nursery
Habitat
Nocturnal
Restoration
Marine Protected Area

Definition
A. being active or happening at night rather than during the day
B. all the different living organisms within a given area
C. renewal of a damaged, degraded, or destroyed ecosystem by active human intervention
D. place where scientists grow corals underwater on specialized structures, with the goal of replenishing depleted coral reefs
E. part of the environment occupied by an animal or plant
F. sections of the ocean that are partitioned off from certain human activities for the protection of resources

Reef Detectives



Look at the reef scene. Circle or label:

- one animal that is hiding
- one animal that is feeding
- one animal that is swimming in a group
- one animal using the reef for shelter
- one coral colony

Now complete the table below:

What did you spot?

How was it using the reef?



From tiny fish to people

Coral reefs support fish, and fish can support people. Complete the flow diagram using the word bank below. Not all words will be used!

people | bigger fish | reef shelter | small fish | coral structure

_____ creates holes, ledges, and hiding places.



_____ use the reef for protection.



Small fish become food for _____.



Healthy fish populations can support fisheries.



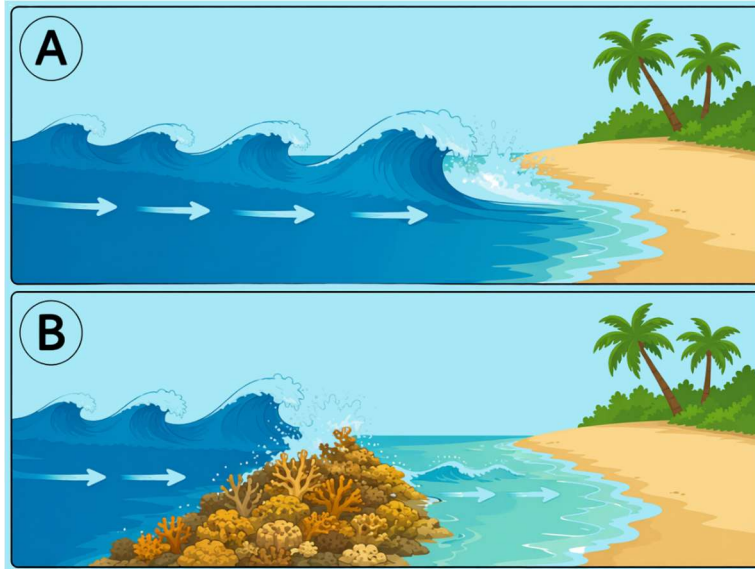
Fisheries can support _____.

Answer the question below.

1. What might happen if the coral structure became damaged or flattened?

Coral reefs as coastal barriers

In the broadcast, the host used a model to show how reefs can help protect the coast.



Label the diagram using the words below. Not all words will be used!

open ocean | coral reef | shoreline | wave energy | erosion

Complete the sentences below using the words from the word bank above.

When waves travel across the _____, they carry energy.

A rough _____ structure can help slow the waves down.

This means less _____ reaches the shore.

This can help reduce flooding and _____.



Day reef vs night reef

Coral reefs are active during the day and at night, but different animals and behaviours may be easier to see at different times.

Sort the behaviours listed below into the correct column.

coral polyps extending tentacles | daytime fish feeding | nocturnal animals

hunting | fish hiding in coral | animals moving across the reef at night |

fish swimming in groups

Day reef

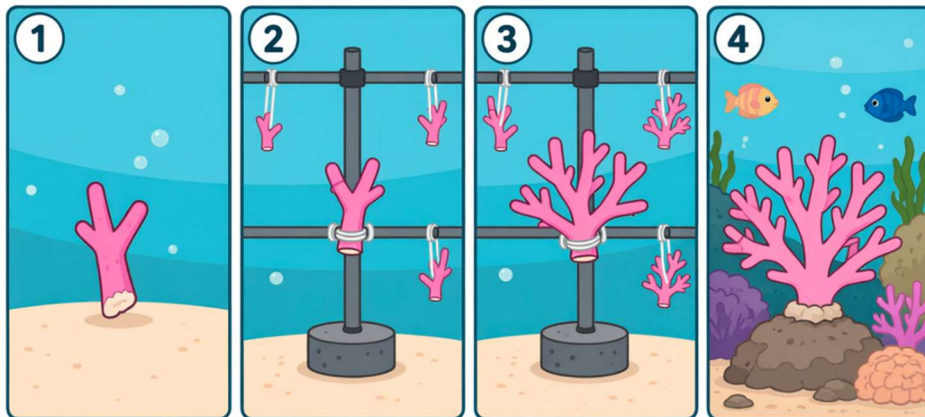
Night reef

Complete the sentence:

A nocturnal animal is an animal that is _____.

Coral restoration: helping reefs recover

Scientists at CCMI grow corals in nurseries and later outplant them back onto the reef.



Number the steps of coral restoration from 1 to 4 (1 is the first step; four is the final step).

- ___ Coral is outplanted back onto the reef
- ___ Small coral fragments are grown in a coral nursery
- ___ Scientists monitor coral health and growth
- ___ The coral grows bigger over time

Now answer:

Why can coral restoration help damaged reefs recover?

Why is restoration not a complete solution on its own?



Be an Island Guardian

Coral reefs need people to help protect them. Some actions help reefs, and some actions harm them.

Tick/check the actions that HELP protect coral reefs. Put an X next to actions that HARM them.

- Touch or stand on coral
- Reduce single-use plastic
- Follow marine park rules
- Leave rubbish on the beach
- Choose sustainable seafood
- Anchor a boat on coral or seagrass
- Support coral restoration projects
- Tell someone what you learned about reefs



World Ocean Day mini poster

Design a small poster called:

Coral Reefs and Us: Our Island Guardians

Your poster should include:

- one way reefs help marine life
- one way reefs help people
- one way people can help reefs
- at least three key terms from today's broadcast